

2008 Snapshot

Jacobs School Stats

Faculty	187
Full-Time Faculty	181
Part-Time Faculty	6
Members of the National Academies	18
Endowed Chair Professors	29

Graduate Students	
Degrees Conferred, 2008	375
Enrollment	1,219
Domestic Students	64%
International Students	36%
Female Students	21%
Male Students	79%

Undergraduate Students	
Degrees Conferred, 2008	800
Enrollment	3,881
Female Students	23%
Male Students	77%

Total Expenditures FY08	\$187.1M
State-Funded Operations/Instruction	\$51.0M
Research Expenditures	\$136.1M
Government-Sponsored Research	\$95.7M
Industry-Sponsored Research/ Income from Gifts/Endowments	\$40.4M
Research/Full-time Faculty Member*	\$778K

*175 full-time faculty in Fall 2007

Commercialization FY08*	
Invention Disclosures	108
New Patents Issued	8
Startup Companies	4
Copyright and License Agreements	25

*Preliminary

Corporate Affiliates Program
50+ industry members. Member benefits include customized access to students and faculty, research partnerships, and a voice in the future of engineering education.

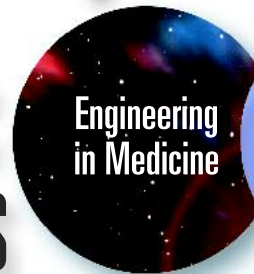
William J. von Liebig Center for Entrepreneurism and Technology Advancement

Since inception in 2001, more than \$3.8M in seed funding and business mentoring services to over 90 faculty projects; 16 von Liebig startups have raised over \$78M in private capital.

UC San Diego Stats

Full-Time Faculty	943
Part-Time Faculty	223
Undergraduates	22,770
Graduate Students	5,550

Strategic Focus



Academic Departments

BIOENGINEERING

18 faculty, 188 graduate students, 913 undergraduates

A leader in systems biology, regenerative medicine, and multi-scale bioengineering focused on understanding, diagnosis and treatment of human disease.



COMPUTER SCIENCE & ENGINEERING

48 faculty, 275 graduate students, 603 undergraduates

Strengths include architecture, bioinformatics, computer-aided design, computer vision, cryptography, databases, embedded systems, graphics, Internet malware, programming systems, software engineering, systems, and theory.



ELECTRICAL & COMPUTER ENGINEERING

51 faculty, 384 graduate students, 592 undergraduates

A leader in information technology and communications, as well as network infrastructure, embedded systems, electronic circuits/systems, electronic devices/materials, nano-electronics/photonics, signal processing/intelligent systems, bionanotechnology, energy generation/conversion, and magnetic/optical storage.



MECHANICAL & AEROSPACE ENGINEERING

40 faculty, 252 graduate students, 1,037 undergraduates

This interdisciplinary department covers mechanical, aerospace, and environmental engineering. Focus areas include fluid mechanics, combustion, solid mechanics, bio/nano-materials, systems/control, energy, electromechanical devices and medical devices.



NANOENGINEERING

10 faculty, 7 graduate students, 276 undergraduates

Research in a broad range of topics, with particular focus on biomedical nanotechnology, nanotechnologies for energy conversion, computational nanotechnology, and molecular and nanomaterials.



STRUCTURAL ENGINEERING

20 faculty, 113 graduate students, 460 undergraduates

A leader in large-scale testing research, programs cover multi-hazard mitigation including earthquakes and blast, earthquake engineering and infrastructural renewal, structural health monitoring, composite- and nano-materials and lightweight structural systems, and risk engineering.



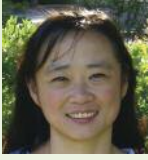
New Faculty



Yuri Bazilevs
Assistant Professor, Structural Engineering
 Computational engineering and sciences, with an emphasis on geometrically exact methods in computational mechanics, fluid-structure interaction, and biomechanics.
 PH.D. UNIVERSITY OF TEXAS AT AUSTIN, 2006
 Most recently: Lecturer, University of Texas at Austin



Zhaowei Liu
Assistant Professor, Electrical and Computer Engineering
 Nanoscale science and technology, photonics, super-resolution optical microscopy, plasmonics, metamaterials, biomedical imaging and sensing.
 PH.D. UCLA, 2006
 Most recently: Postdoc, UC Berkeley



Jennifer Cha
Assistant Professor, NanoEngineering
 Biological and chemical approaches for assembling nanoscale materials, such as metal and semiconductor nanoparticles, nanorods, nanowires, and single walled carbon nanotubes.
 PH.D. UC SANTA BARBARA, 2001
 Most recently: Researcher, IBM Almaden Research Center



Joseph Wang
Professor, NanoEngineering
 A leader in a wide range of research areas including nanomachines, nanobioelectronics, and sensing technologies for applications including clinical diagnostics, environmental and security monitoring and remote sensing. Wang was the most cited engineer from 1991 to 2001 and is consistently one of the world's most cited engineers and chemists.
 D.S.C IN CHEMISTRY, TECHNION, ISRAEL INSTITUTE OF TECHNOLOGY, 1978
 Most recently: Professor, Arizona State University and Director of the Center for Bioelectronics and Biosensors



Lelli Van Den Einde
Lecturer, Structural Engineering
 Performance-based earthquake engineering including bridge structures, data development and management, telepresence, and educational technology.
 PH.D. UC SAN DIEGO, 2001
 Most recently: Lecturer, UC San Diego, and San Diego State University



Liangfang Zhang
Assistant Professor, NanoEngineering
 Nanomaterials and nanomedicine, including developing nanomaterials for healthcare and other medical applications such as drug delivery to improve or enable treatments of human diseases.
 PH.D. UNIVERSITY OF ILLINOIS AT URBANA-CHAMPAIGN, 2006
 Most recently: Postdoc, MIT

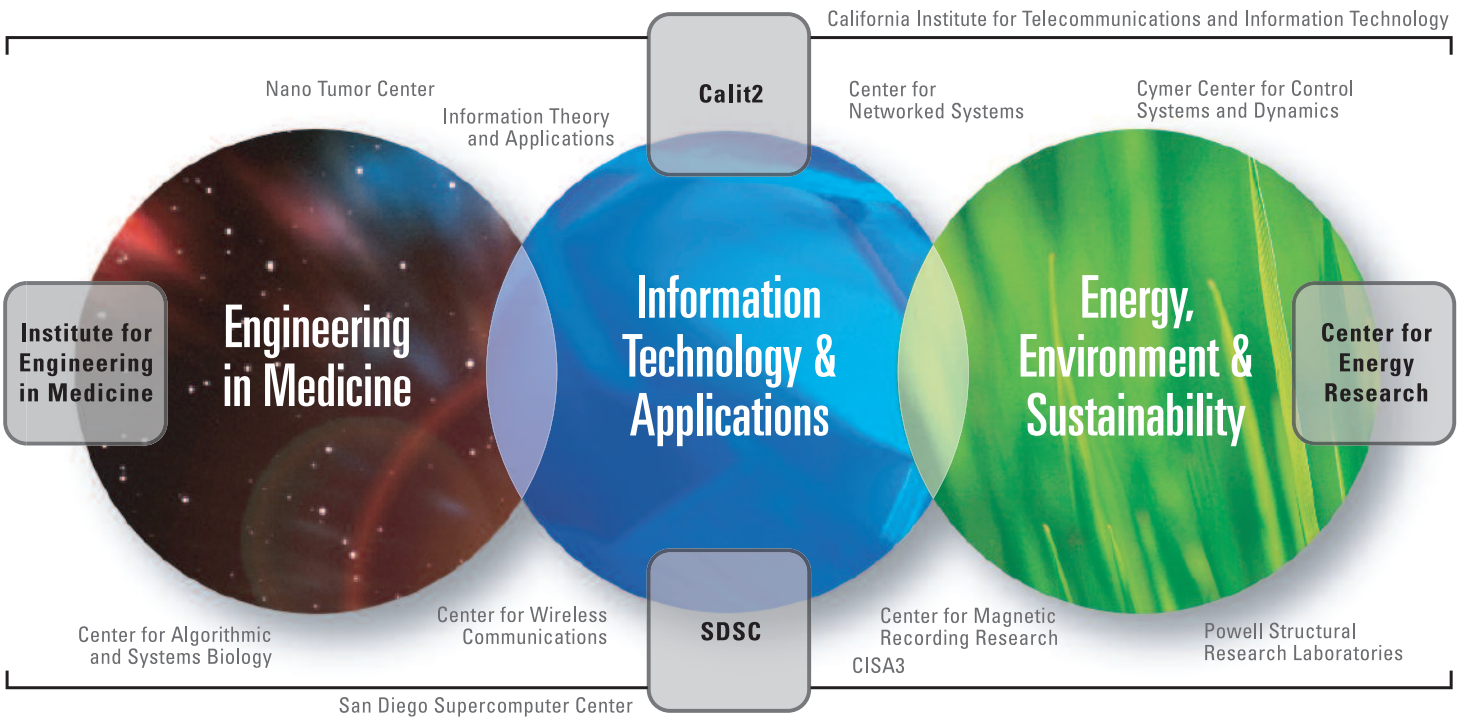


Adam Engler
Assistant Professor, Bioengineering
 Stem cell research, with an emphasis on how adult and embryonic stem cell differentiation is controlled by the extracellular matrix.
 PH.D. UNIVERSITY OF PENNSYLVANIA, 2006
 Most recently: Postdoc, Princeton University



Yuanyuan Zhou
Professor, Computer Science and Engineering
 Operating systems, computer architecture and databases with a focus on challenges in designing next generation systems, energy and thermal management for data centers, architectural and system support for software debugging and storage systems.
 PH.D. PRINCETON UNIVERSITY, 2000
 Most recently: Associate professor, University of Illinois at Urbana-Champaign

Affiliated Research Institutes



University of California, San Diego
 Jacobs School of Engineering
 9500 Gilman Drive, Dept. 0403
 La Jolla, CA 92093-0403
 www.jacobsschool.ucsd.edu
 858.534.4575

Dean: Frieder Seible
 Associate Dean: Jeanne Ferrante
 Associate Dean: Charles Tu